

RECLAMATION

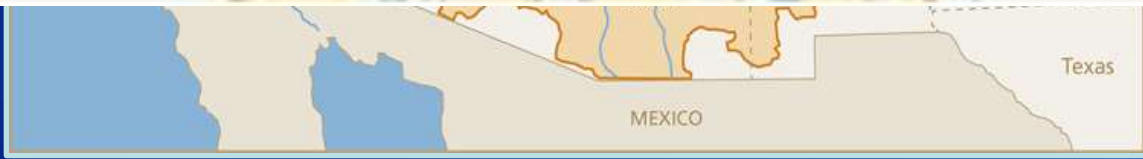
Managing Water in the West

**Wyoming Water Forum
Fontenelle Operations
April 11, 2017**



U.S. Department of the Interior
Bureau of Reclamation

Jed Parker, P.E.
Upper Colorado Region



RECLAMATION

Fontenelle Reservoir Current Status

Storage

Live capacity	345,000	AF
Capacity on 4/9/2017	<u>168,368</u>	AF
	<i>(49% full) high for April</i>	

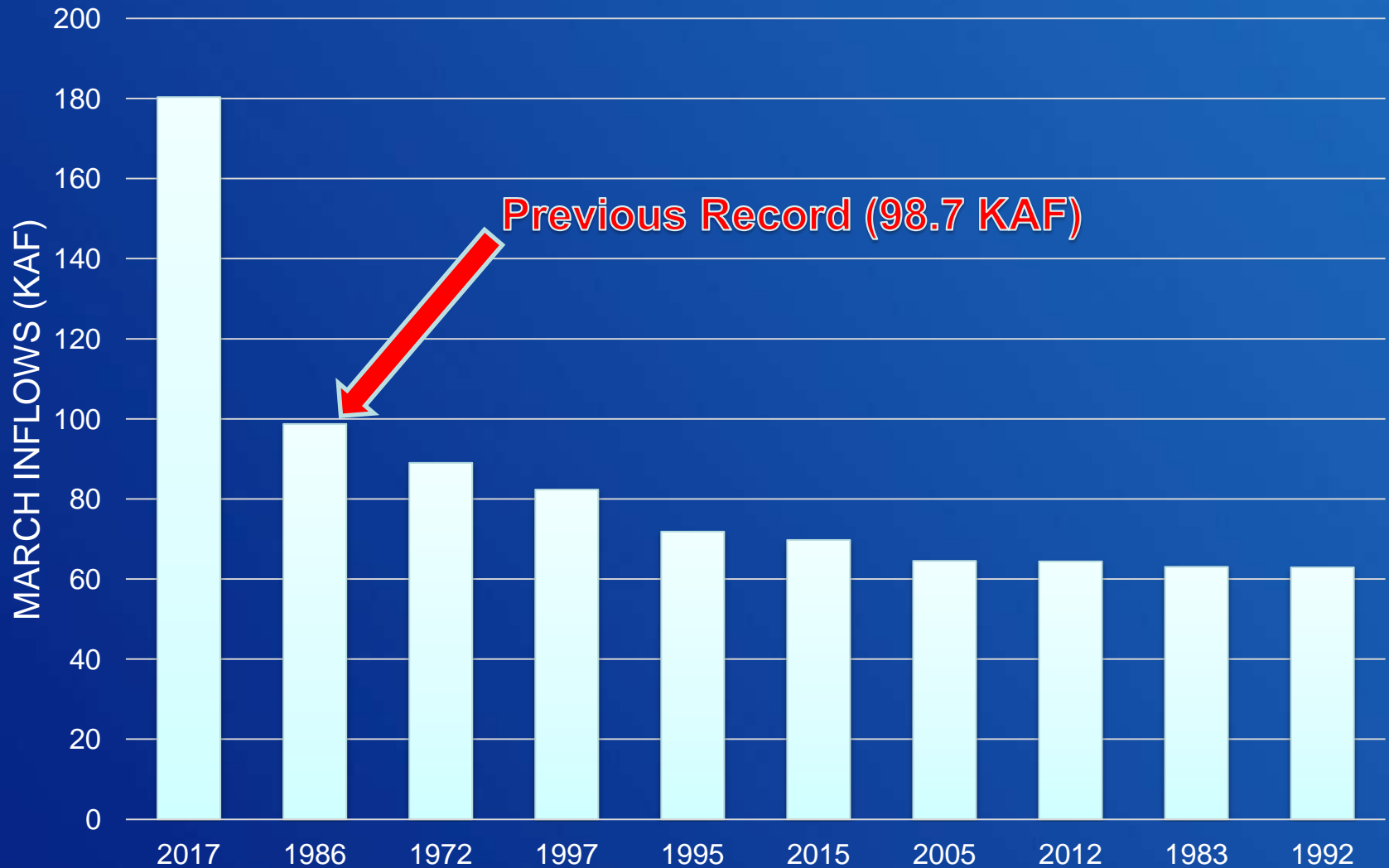
Pool elevation

Reservoir elev. (Min)	6463.00	feet
Elevation on 4/9/2017	<u>6480.41</u>	feet
Elevation above (Min)	17.41	feet

Inflow and release

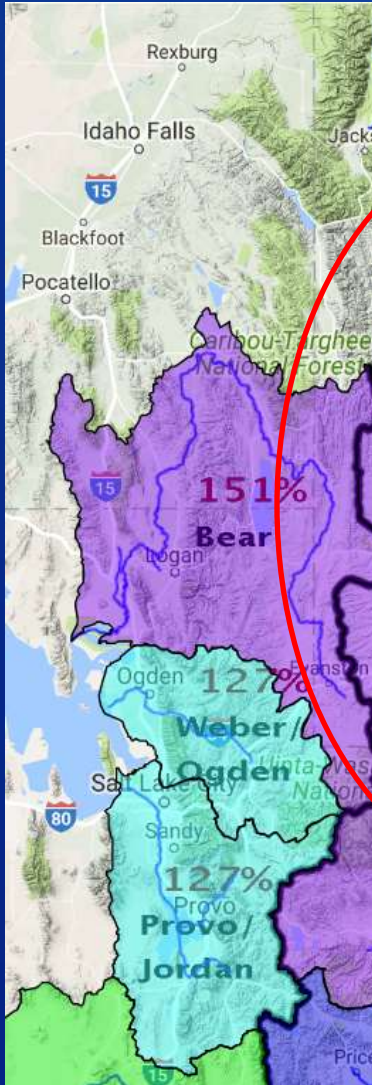
Average inflow	3,600	cfs
Average release	5,500	cfs

Miracle or Malevolent March?

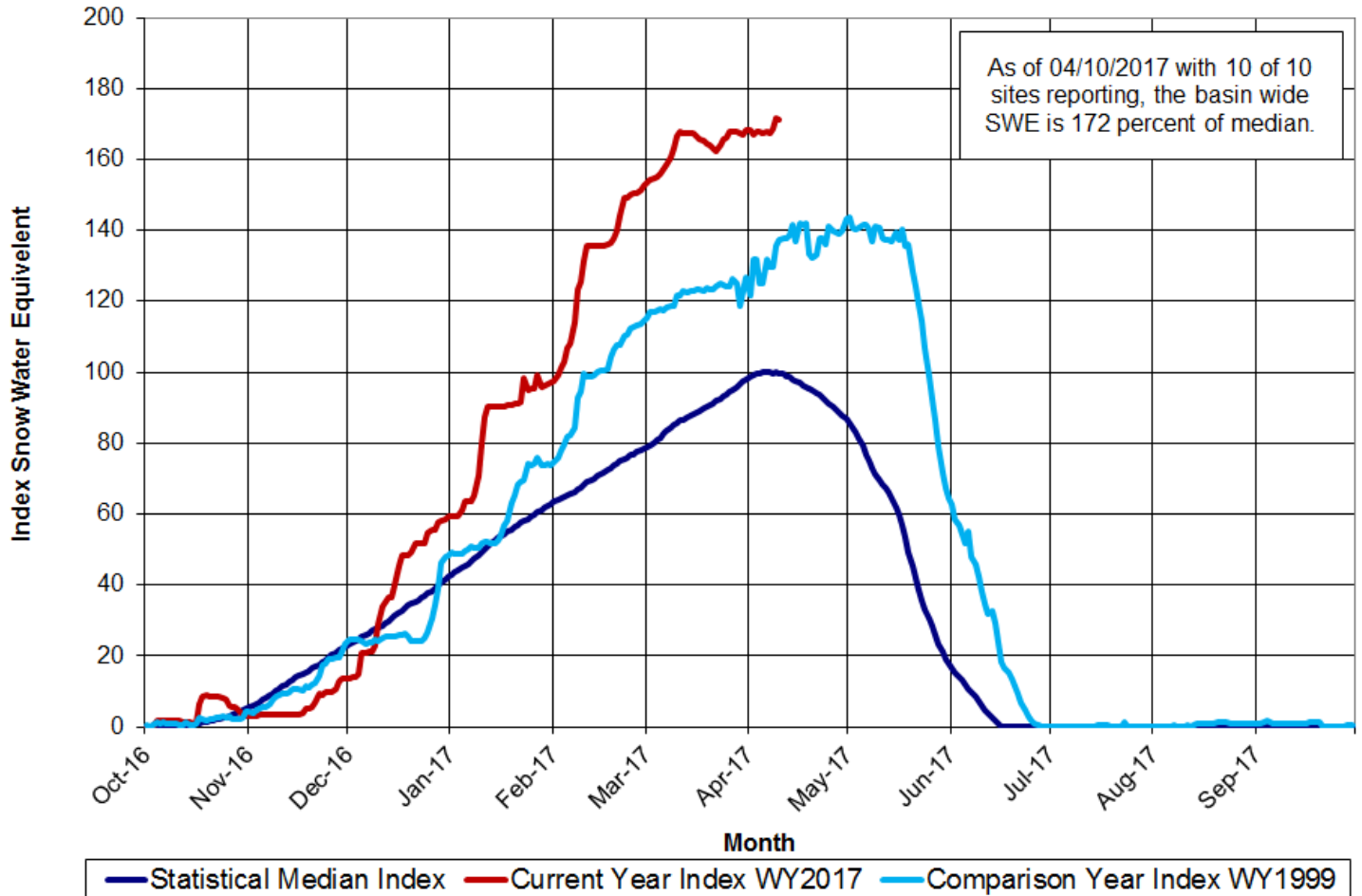


RECLAMATION

Snow Water Equivalent (SWE)



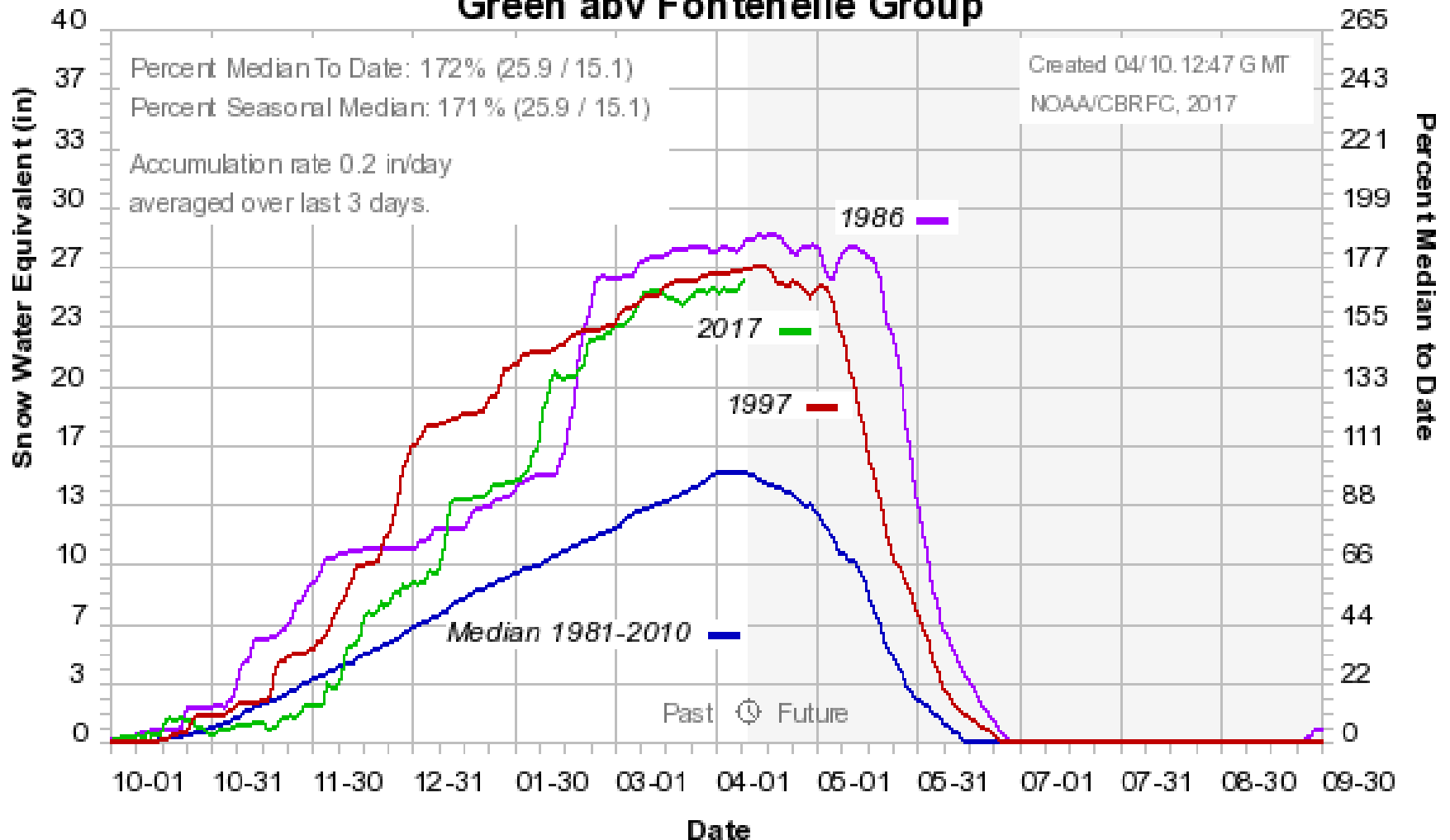
Upper Green River Basin Snotel Tracking
Aggregate of 10 Snotel Sites above Fontenelle Reservoir



Data Provided by the Natural Resource Conservation Service

Current Snowpack

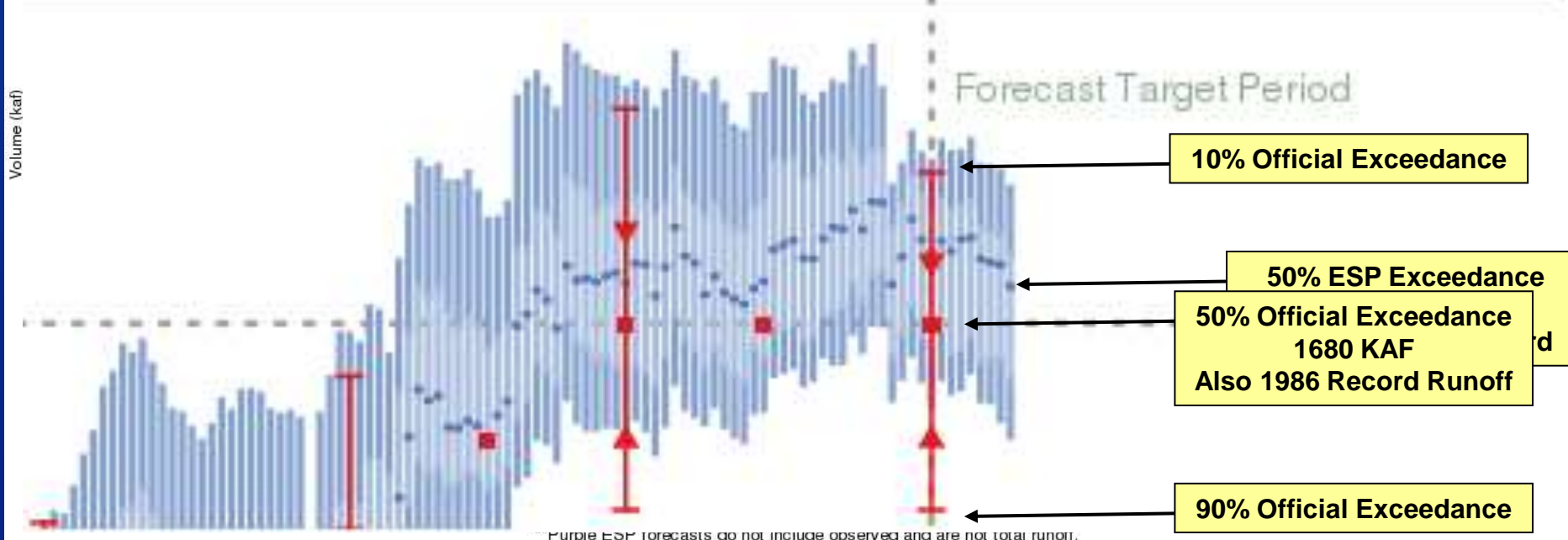
Colorado Basin River Forecast Center Green abv Fontenelle Group



Forecast Evolution

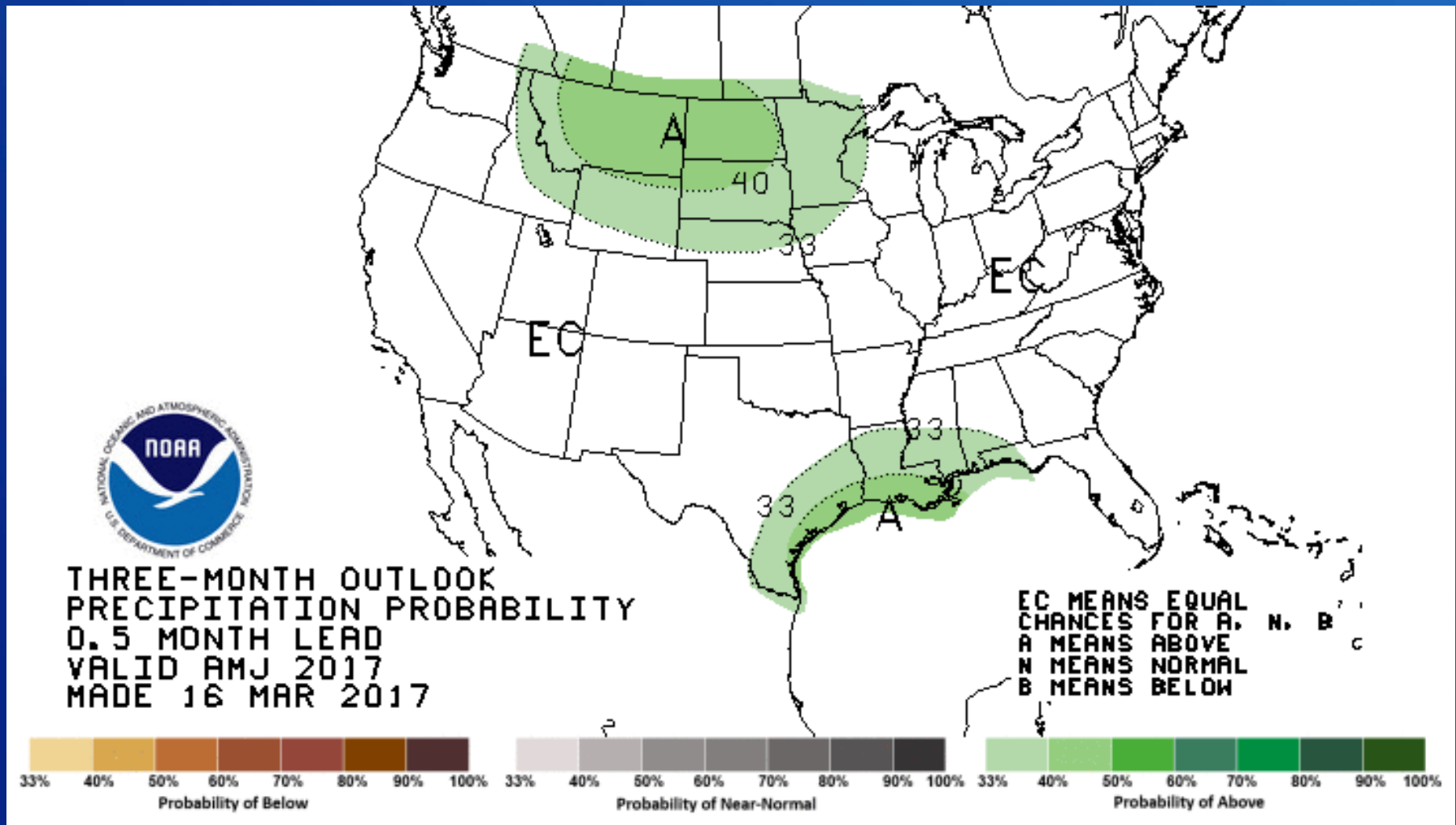
Green - Fontenelle Res- Fontenelle Nr (GBRW4)
2017-04-01 Apr-Jul Official 50% Forecast: 1680 kaf (232% of average)

Green - Fontenelle Res- Fontenelle Nr (GBRW4)
2017-04-01 Apr-Jul Official 50% Forecast: 1680 kaf (232% of average)
ESP is Unregulated and Includes 5 Day Precipitation Forecast



RECLAMATION

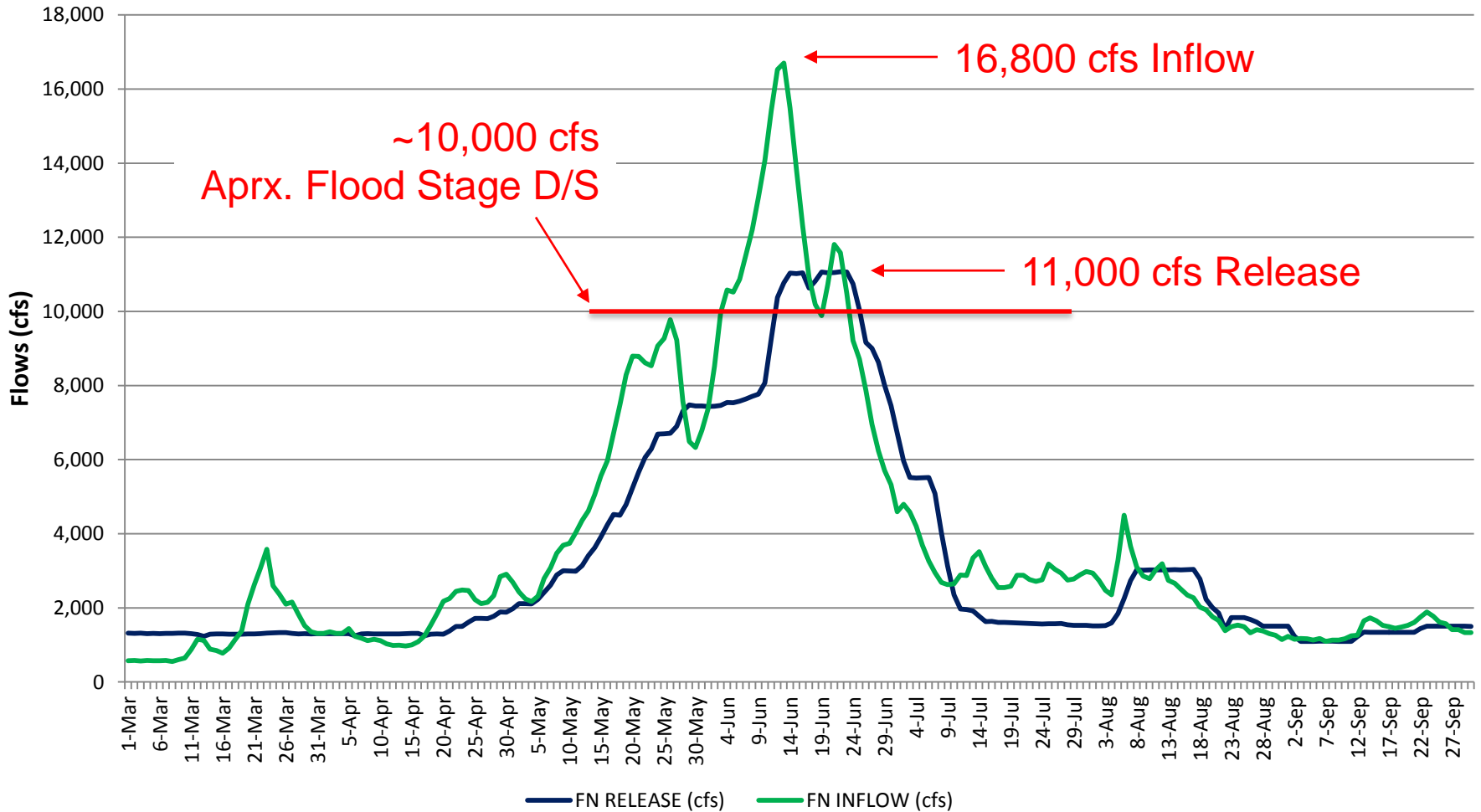
Three-Month Precipitation Outlook



RECLAMATION

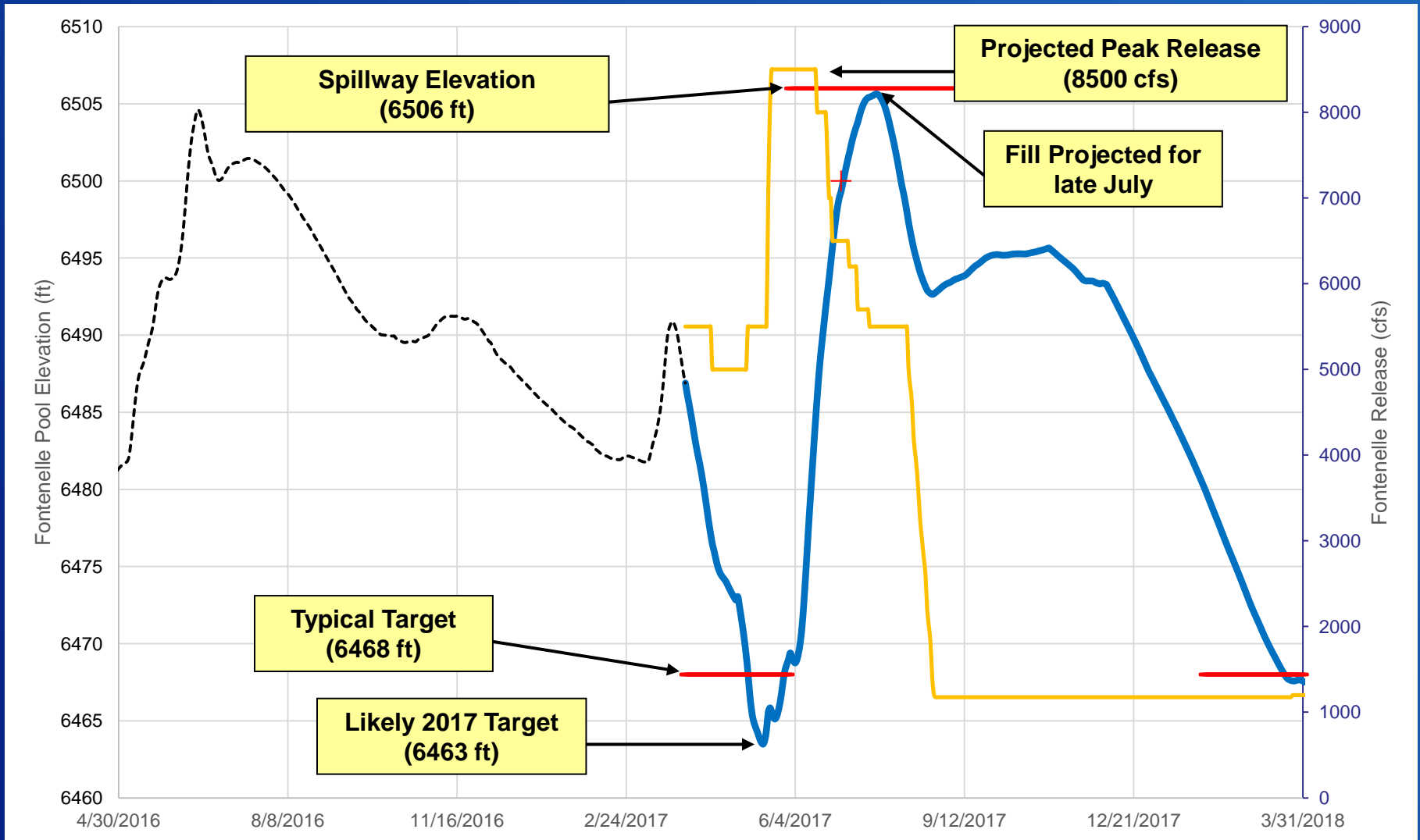
Historic Operations

Fontenelle Dam Inflow & Releases, 1997



Projected Reservoir Elevation

Based on April Forecast



Review

- Possible record snowpack above Fontenelle
- Planning to safely pass flows without use of the spillway (8,500 cfs peak release)
 - Should avoid flooding downstream
 - Possibility releases could exceed flood stage (>10,000 cfs)
- State of Wyoming will have full access to right

Wyoming Water Forum

April 2017

Questions / Comments ?

Jed Parker, P.E.
jparker@usbr.gov
801-524-3816

<https://www.usbr.gov/uc/water/crsp/cs/ftd.html>

RECLAMATION