

PART I.

CHAPTER VI.

SPECIAL APPLICATIONS

Section 1. Authority. Section 33-366, Wyoming Statutes 1957, as amended by Section 1, Chapter 194, Session Laws of Wyoming 1971; and Section 41-121.1, Chapter 171, Session Laws of Wyoming 1973, provide for the filing of applications with the State Engineer for facilities meeting the following limitations:

- a. Stock reservoirs not to exceed 20 acre-feet in capacity or 20 feet in fill height.
- b. Fishing preserve reservoirs not to exceed 20 acre-feet in capacity or 20 feet in fill height.
- c. Floodwater detention reservoirs not to exceed 50 acre-feet in capacity, 20 feet in fill height, or 20 acre-feet of inactive capacity; and providing said dam has a minimum outlet of 18 inches in diameter.
- d. Facilities diverting from springs where the yield does not exceed 25 g.p.m. (0.056 CFS) for stock or domestic purposes only, shall be considered as ground water and the ground water application procedure must be used.

Facilities diverting from springs where the yield exceeds 25 g.p.m. (0.056 CFS) for stock purposes only, must follow the filing procedure outlined by this Chapter, and will be limited to 25 g.p.m. (0.056 CFS).

Section 2. General Requirements.

- a. Unless otherwise specified by this Chapter, all applicable requirements of this Manual shall apply.
- b. Applications coming within the specified limitations in Section 1 of this Chapter, may be accompanied by aerial photographs or United States Geological Survey quadrangle maps conforming to Section 3 of this Chapter.

Section 3. Aerial Photographs or U.S.G.S. Quadrangle Maps.

- a. Each application must be accompanied by an original quadrangle map or an aerial photograph. To facilitate preparation and filing, this office requests the size of the aerial photographs or U.S.G.S. quadrangle maps to be 9" x 9". However, 8" x 10" size will be acceptable. (Xerox or other similar copies are not acceptable.)
- b. The minimum scale of 2" = 1 mile will be acceptable.
- c. The preferred scale of aerial photographs is 4" = 1 mile.
- d. The preferred scale of U.S.G.S. quadrangle maps is 1:24000,

PART I.

(1" = 2000').

e. The scale must be shown on all U.S.G.S. quadrangle maps and aerial photographs.

f. A "north arrow" must be shown, and the U.S.G.S. quadrangle map or photograph should be oriented so that the top is north.

g. When any part of a section is involved in an application, the entire section, subdivided into forties, lots, tracts, homestead entries, etc., as applicable, must be shown and properly identified including the section number, township and range.

h. A corner of the public land survey must be identified on the ground and accurately shown on the aerial photograph or U.S.G.S. quadrangle map. Such corner should be the nearest available corner to the facility involved.

i. The location of the facility must be accurately shown within the proper 40-acre subdivision or subdivisions.

j. Streams must be identified by name.

k. The name of the facility should be shown on the lower right hand corner of the map, and adequate space for stamping the permit number must be provided. (See sample map on page 51).

l. The aerial photographs or U.S.G.S. quadrangle maps need not be certified by a licensed engineer or land surveyor, but the statement of declaration on the application and on the Reservoir Application Supplemental Sheet for filings on Form S.W. 3, must be signed by the applicant or his agent.

m. Black waterproof ink must be used for information shown on these maps. DO NOT USE BALL-POINT PENS.

Section 4. Stock Reservoirs. Applications for stock reservoirs not exceeding 20 acre-feet in capacity or 20 feet in fill height, may either be filed on Form S.W. 4, (the regular Stock Reservoir application form) in accordance with the requirements of Section 6 of Chapter V, (page 38); or such applications may be filed under the provisions of this Chapter as follows:

a. Use Form S.W. 4. Complete the form in accordance with Section 6 of Chapter V, (page 38) except for the following:

(1) The Location Map and Area Map on page 2 of the application form, are not required if the application is accompanied by an aerial photograph or U.S.G.S. quadrangle map. (See Section 3 of this Chapter, page 47).

b. The aerial photograph or U.S.G.S. quadrangle map must show the

PART I.

outline of the submerged area of the reservoir, the name of the reservoir, and the name of the stream upon which the reservoir is located. (See sample map on page 51).

Section 5. Fishing Preserve Reservoirs. Applications for fishing preserve reservoirs not exceeding 20 acre-feet in capacity or 20 feet in fill height, may be filed on Form S.W. 3, (the regular Reservoir application form) in accordance with the requirements of Section 4 of Chapter V, (page 35); or such application may be filed on Form S.W. 3 with the Reservoir Application Supplemental Sheet, Form S.W. 3-A, under the provisions of this Chapter as follows:

a. Complete the reservoir application form, Form S.W. 3 in accordance with Section 4 of Chapter V, (page 35), with the following exceptions:

(1) ITEM 5 -- "The outlet of the proposed reservoir is located" -- A corner tie is not required but should be provided if such information has been determined. However, the location of the reservoir by proper 40-acre subdivision, section, township and range, must be specified.

b. Complete all items on the Reservoir Application Supplemental Sheet. See Form S.W. 3-A on page 52.

(1) Furnish details relative to the reservoir and dam. If an item is not applicable, enter "NA".

(2) Furnish spillway details and hydraulic properties.

(3) Complete the profile of damsite.

(4) Sign and date the statement of declaration.

c. The aerial photograph or U.S.G.S. quadrangle map must show the outline of the submerged area of the reservoir, the name of the reservoir, and the name of the stream upon which the reservoir is located. (See sample map on page 51).

Section 6. Supply Ditches. If a supply ditch is to be used to fill or to furnish additional water from another source for a stock reservoir or fishing preserve reservoir, a separate application for the supply ditch will be required. Such application must be prepared in accordance with the requirements of Sections 2 and 3 of Chapter V, page 34, and shall require a linen tracing.

Section 7. Floodwater Detention Reservoirs. Applications for floodwater detention reservoirs not exceeding 50 acre-feet in capacity, 20 feet in fill height, 20 acre-feet of inactive capacity; and providing said dam has a minimum outlet of 18 inches in diameter; may be filed in accordance with the same procedure and requirements as specified for fishing preserve reservoirs in Section 5 of this Chapter.

PART I.

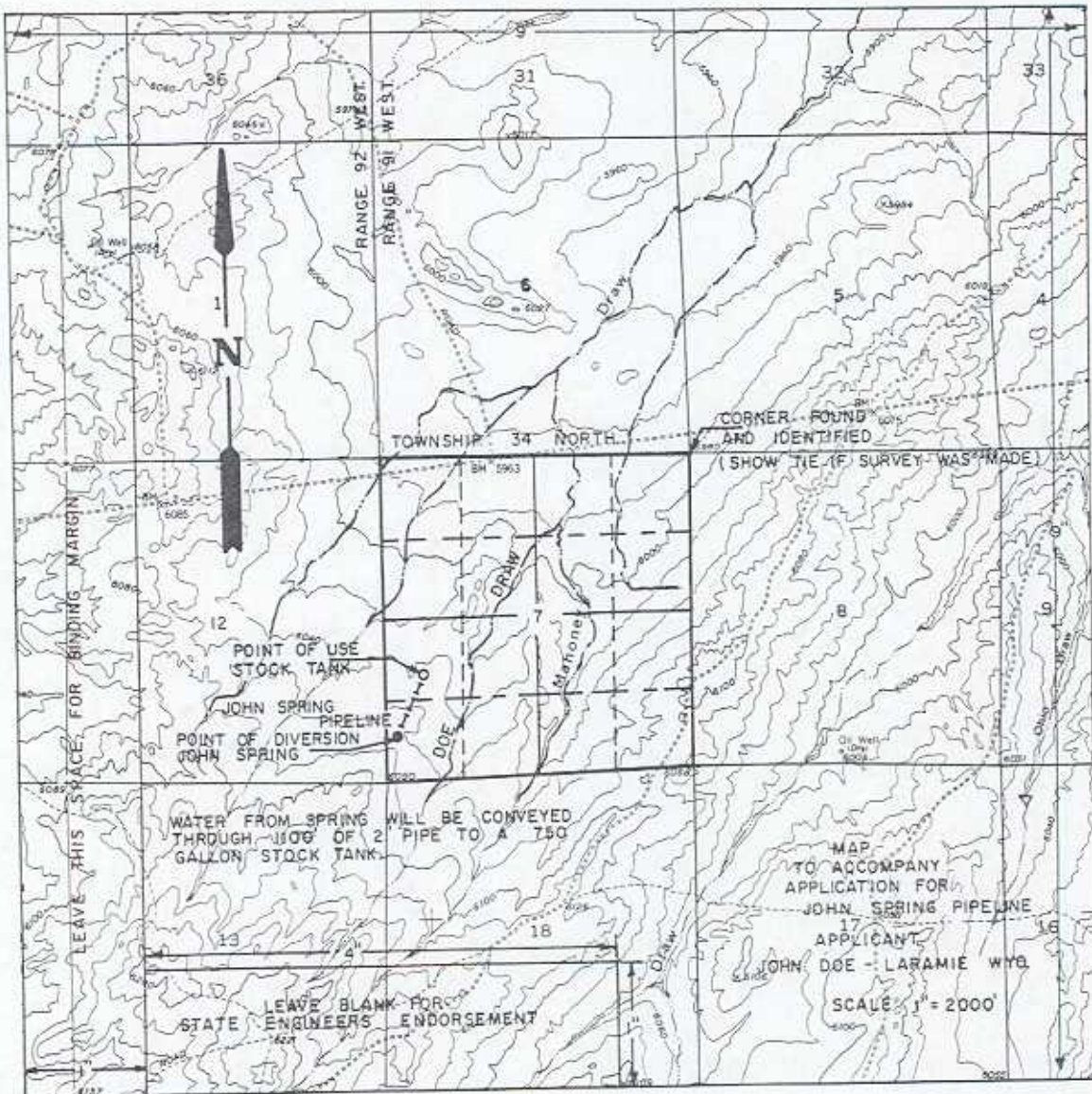
Section 8. Springs - Stock Water Facilities.

a. Use Form S.W. 1, (the regular application form for a Permit to Appropriate Surface Water). Refer to Chapter III, page 6, for general instructions. The following exception shall apply:

(1) ITEM 5 -- "The point of diversion of the proposed works is located" -- A corner tie shall not normally be required. However, in the case of other springs in the immediate area, and to avoid possible conflicts, a corner tie may be necessary; therefore, serious consideration should be given to providing a surveyed corner tie at the time of initial filing. In any case, the location of the point of diversion by proper 40-acre subdivisions, section, township and range, must be specified.

b. An aerial photograph or U.S.G.S. quadrangle map may be used in place of a linen tracing map and must show and identify the point of diversion, means of conveyance, point of beneficial use, name of spring, and name of stream. (See sample map, page 51).

PART I.



PLEASE NOTE

- 1) Map must comply with all requirements under Section II of attached instruction sheet.
- 2) Do not use ball-point pens - black waterproof ink must be used for all information shown on these maps.
- 3) If an aerial photo is used, it should agree in all respects with information shown on this sample map. (Contour lines are not required on aerial photos.)

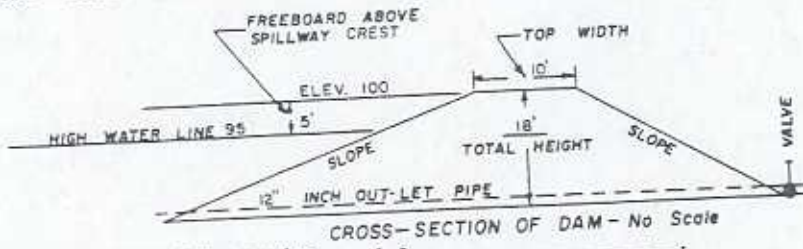
PART I.

RESERVOIR APPLICATION SUPPLEMENTAL SHEET
(Use with Form S.W. 3)
for

THE BROWN RESERVOIR Temp. Filing No. _____

The following information, as applicable, must be furnished when filing applications under the provisions of Chapter 194, Wyoming Session Laws, 1971. (Re: Chapter V of the Manual of Regulations and Instructions).

RESERVOIR - Details of Dam:



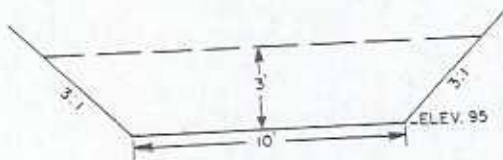
Depth of water below outlet 1.0
Construction Materials Clay

RESERVOIR

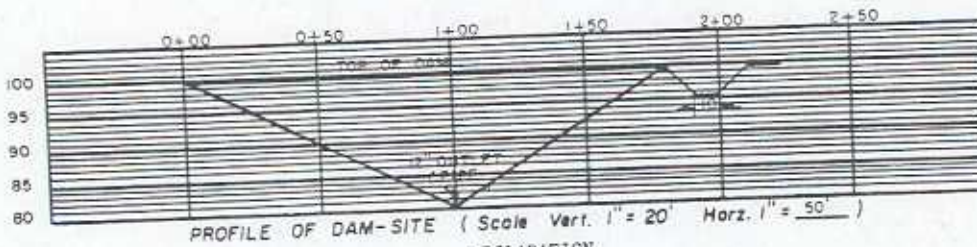
Details of body: length 300 Width 100 Average Depth 7
Total submerged area 1.5 ac., Submerged Area below Outlet .05
Total Capacity 6.50 acre-feet, Capacity below outlet 0.02 acre-feet.

NOTE: Capacity = submerged area x water depth $\div 3$ = _____ acre-feet.

SHOW CROSS-SECTION AND HYDRAULIC PROPERTIES OF SPILLWAY IN THE SPACE PROVIDED BELOW:



A = 57 sq. ft. n = 0.025
r = 1.97 S = 0.001
V = 2.95 f.p.s. Q = 168 cfs.



DECLARATION

Under penalties of perjury, I declare that the information shown above is true, correct and complete and that the accompanying aerial photograph or U.S.G.S. quadrangle map shows accurately the location of the proposed facility.

James H. Smith
Signature of Applicant or Agent

August 14, 1973
Date

Permit No. _____ Res. _____

Page No. _____
(Leave Blank)